

PROFILE

Rural Integrated Center for Community Empowerment (RICCE)



Organization Contact:

Salome G. Gofan - Executive Director

Israel Community, Mount Barclay

Johnsonville Township

Montserrado, Liberia

Email: ricce2004@gmail.com

Email: info@ricce.org

Cell: +231-886-400-922/ +231-770-470-025

www.ricce.org



Who We Are

RICCE works to empower rural communities and promote sustainable natural resource management and environmental protection in Liberia

Brief History

On August 5, 2005, the organization RICCE was founded by development specialists, Engineers, health professionals, grassroots activists, and some professors at the University of Liberia who were alarmed by the exclusion of rural people especially women participation in decision making about national issues which have impacts on their lives. RICCE was established as a non-governmental, non-profit and non-political organization.

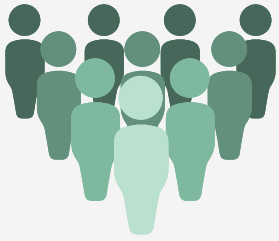
OUR VISION

RICCE envision a community of hope and social justice where all people live in harmony with nature

OUR MISSION

RICCE is a Right–Base and development organization established to contribute to the empowerment of rural communities particularly women and girls through integrated programs

Our Values



Gender Responsiveness



Transparency & Accountability



Integrity



Self Help



Teamwork & Teambuilding



Commitment

Our Programmes

Food Security & Livelihood Development

Gender Equality & Women Empowerment

Environmental Safety, Sustainable Natural Resource Management, Biodiversity Conservation

Rural Income Generation

Peace Building & Reconciliation

Our Approach

RESEARCH & DOCUMENTATION

We work with communities and other stakeholders to identify and document needs and gaps within the communities.



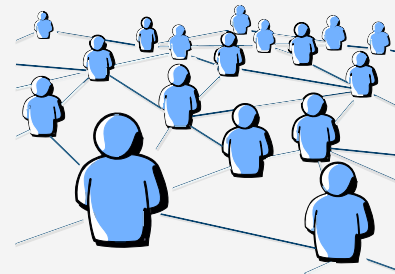
IMPLEMENTATION & MONITORING

We implement the proposed solutions while monitoring key activities and evaluating their outcome and impacts on communities' livelihood.



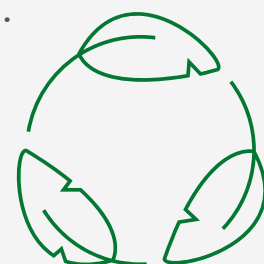
NETWORK & COLLABORATION

We develop partnerships with key stakeholders in developing proposed solutions to the needs identified in communities.



ENGAGEMENT & SUSTAINABILITY

We continue to stay engaged with project communities and ensure long term sustainability of project impact after the project life cycle.



RICCE QUICK STATS

16+
YEARS OF
EXPERIENCE
WORKING IN THE
NONPROFIT
SECTOR



20+
PROJECTS
IMPLEMENTED
SUCCESSFULLY
ACROSS LIBERIA



12+
INTERNATIONAL
DONORS
GLOBALLY AND
LOCALLY HAVE
WORKED WITH US



Cooperation and Networking

We consider cooperation as a necessary tool for development processes. Therefore, we maintain partnerships with different stakeholders, being aware of the importance of every single pillar: local communities, authorities, other organizations, and individuals at the national and international level

Over the years RICCE has established partnerships with both national and international organizations in ensuring that our objectives are achieved. RICCE has established collaboration with many networks organizations given that our advocacy and the implementation of projects.

Collaboration at International Level

- Global Forest Coalition (GFC)
- Women Gender Constituency of the UNFCCC (WGC)
- International Indigenous Women Forum (FIMI)
- Women Major Group of SDGs (CSW)
- Women 2030

Collaboration at National Level

- WONGOSOL - Women NGO Network of Liberia
- Gender Task Force
- Agriculture Steering Committee - MOA
- National Civil Society Council of Liberia
- Coalition of NGOs working and forest and Environment
- Community Forestry Working Group – CFWG
- National REDD+ Technical Working Group
- Climate Change Steering Committee
- Safe Guard Working Group

Past and Present Donors



2021- Present



2019- Present



2018- Present



2008- Present



ArcelorMittal

2013 - Present



UNHCR
The UN Refugee Agency

2018 - Present



2021

CONSERVATION
INTERNATIONAL



2011 - 2019



AFRICAN
WOMEN'S
DEVELOPMENT
FUND

2014 - 2016



2009-2010



2011- 2012



2008-2009



Women's Campaign
International

2008

Capacity Statement

RICCE has academically qualified and experienced staff both at head office and field offices. RICCE is a member of many networks in Liberia and a founding member of the Liberia Civil Society Council.

RICCE has vast knowledge and experience in project management and financial management. RICCE has a strong financial management policy which is a guide for promoting Transparency and Accountability in our work. Over the years RICCE has built a strong relationship with its Donor due to the level of commitment and integrity we employ in our work. We are accountable to our donors and the communities we serve.

RICCE has over the years developed a strong technical and managerial capacity to implement projects in any community within Liberia.



Salome G. Gofan

EXECUTIVE DIRECTOR



Renee N. Gibson

PROGRAM MANAGER



Agnes Sonkarlay

FINANCE OFFICE



Isaac JC Kamara

FIELD OFFICER



Quoi G. Flomo

FIELD OFFICER



Maryrose Jacobs

STAFF

**OUR
PROJECTS
PROFILE**

Project Title	Objective	Amount in USD	Date	Location	Donor
Building Women Solidarity to End Sexual Gender-Based Violence and Harmful Traditional Practice	To mobilize and empower CSOs and strengthen women movement to advocate and lobby for change in laws and policies at the same time create awareness on SGBV prevention to eliminate violence against women and girls in Nimba County	USD \$38,823.00	January 2021 to June 30, 2021	Six administrative districts of Nimba County	UNWOMEN
Strengthening Access to Justice for Vulnerable Population	To contribute to strengthening the rule of law to meet the urgent needs of women and children facing sexual violence (rape), most especially disadvantaged groups to seek legal redress	US\$9757.5	Sept 1, 2020- January 31, 2021	Zoegeh and Gbehlay-geh districts, Nimba County	UNDP
Strengthening and expanding Household food security and Income Generation through sustainable agriculture Intensification phase - 5	To contribute to communities' livelihood through the introduction of sustainable and climate-smart agriculture that supports improved food and nutrition security while maintaining ecosystem integrity	US \$127,025.00	May 1, 2021 – April 1, 2021	Seven communities (Geipa, Yolowee, Zualay, Suakazue, Dulay, and Sehtontuo) around the ENNR located in Gbehlay-Geh District, Nimba County, Liberia	AccelorMittal Liberia
Increasing Women Participation in Natural Resource Management to Restore Traditional Knowledge	To incorporate indigenous knowledge and gender responsiveness in biodiversity conservation and the restoration of indigenous skills for livelihood enhancement.	US\$19,000.00	March 1, 2020 - February 28, 2021	Kpolay and Geipa communities located in Gbehlay-Geh District, Nimba County, Liberia	American Jewish Organization World Services (AJWS)

Increasing Women Participation in Natural Resource Management to Restore Traditional Knowledge		US\$15,000.00	May 1, 2019 - February 25, 2020	Zualay, Geipa, and Kpolay communities in Gbehlay-geh district Nimba County	American Jewish Organization World Services (AJWS)
Conservation Agreement	To facilitate the delivery of benefit packages of Conservation Agreement within six communities around the ENNR	US\$72,340.00	Nov. 27, 2017, Nov. 2018	Gbelay-geh district Nimba County	Conservation International -CI
Consolidating and expanding Household food security and Income Generation through sustainable agriculture Intensification	The project goal is to contribute to the reduction of deforestation through sustainable agriculture in lowlands to enhance household food security, nutrition, and income generation among populations in northern Nimba County.	US\$ 416,171.69	Dec 2017 – Dec 2019	Gbelay-geh district Nimba County	AccelorMittal Liberia
Household Food Security and Income generation through Conservation Agriculture	Reduce Deforestation and Mitigate Climate Change Impact	US\$251,756.00	2015 - 2016	Nimba County	ArcerlorMittal Liberia
Conservation Agreement	To promote Community participation in the Management of the East Nimba Nature Reserve	US\$87,000.00	2015- 2016	East Nimba	Conservation International
To enhance coping mechanisms amongst 50 Women Ebola survivors by facilitating the formation of community-based care	To promote women participation in the fight against Ebola	US\$10,000.00	2015 July to December 2015	Montserrado (VOA) Sierra Leone Refugee	African Women Development Fund (AWDF)

support groups in VOA Community, Browerville					
Piloting Conservation Agriculture in East Nimba Nature Reserve	To pilot conservation agriculture in Zortapa as means to enhance community livelihood and contribute to the management of the ENNR.	US\$74,165.30.00	Oct 2013-April 2014	Zortapa, Yolowee, Geipa, Dulay, and Sehtontuo communities	AcerlorMittal Liberia
Piloting Conservation Agriculture in East Nimba Nature Reserve	To pilot conservation agriculture in Zortapa as means to enhance community livelihood and contribute to the management of the ENNR.	US\$66,999.91.00	Jan – June 2013	Zortapa,	AcerlorMittal Liberia
Assist CFDCs to fulfill their primary responsibility of protecting the rights and interests of affected communities in the forest sector	Establishing catalogue of all the CFDCs in the target regions, gathering copies of all Timber Sale Contracts and forest management contracts, assessing the performance of CFDCs in the target regions, facilitating transparent and participatory community assessment of the performance of logging companies, and assessing the activities of the logging companies on the ground.	\$US15,000.00	Aug.2011- Jan.2012	Region 2 (Nimba, Grand Gedeh, Sinoe, River Gee, Maryland and Grand Kru)	Sustainable Development Initiative (SDI)
Strengthening community Peace to enhance development	Strengthening community Peace to enhance development. The project located in Nimba County facilitate assist two disputing towns to find a common	26,000.00	May – Nov 2010	Dounpay and Zuaplay, Nimba County	UNDP PEACE BUILDING FUND(PBF)

	ground in settling a land dispute that has lasted over thirty years				
Promoting Chain sawing in alignment with sustainability and legality principles through a consolidated developed regulatory framework to support the GFP initiative.	Facilitate a multi-stakeholder consultation to incorporate the views of key stakes in the drafting of regulation to align pit sawing with existing forest policies	US\$131,000.00	June – Dec. 2010	I5 counties of Liberia	International Union for Conservation of Nature (IUCN)
Promoting awareness on policies and Laws governing forest resources in Liberia	Promoting awareness on policies and Laws governing forest resources in Liberia. The project provided information to affected communities in the concession areas- FMC- K in Nimba County to understand their rights and get acquitted with policies governing the forest sector and the social agreement with regards to benefit-sharing- Making the forest sector transparent	\$US3,118.00	Jan- 2010	Nimba County- FMC Area K	Sustainable Development Initiative (SDI)
Localizing the MDGs through StandUp Take Action Campaign in Liberia	Mobilize citizens to participate in an activity that is geared towards achieving the MDGs targets. Stand Up Take Action to demand their gov't to meet the MDGs deliverables	US\$ 23, 000	2009- 2010	Ganta City Nimba and Kakata City, Margibi Counties	United Nation Millennium Campaign Office, Nairobi Kenya
Community facilitator, Margibi County	Facilitate, supervise, and manage all projects of (LACE) and submit a comprehensive report	US\$37, 365.00	2008 – present	Margibi County	Liberia Agency for Community Empowerment

<p>Building women capacity to facilitate tribal harmony and peaceful co-existence between the Gio and Krahn tribes in Nimba County</p>	<p>The project provided peace-building skills to 40 rural women, facilitated peace dialogue between the two opposing tribes in Kparblee District, Nimba County.</p>	<p>US \$ 16,000.00</p>	<p>2008</p>	<p>Nimba County</p>	<p>Women Campaign International</p>
<p>Promote access to justice for women and children facing Rape and Gender Base Violence</p>	<p>The project was funded by UNHCR and implemented by the International Rescue Committee (IRC) in Nimba County. RICCE worked as a local partner to the IRC protection program – raised awareness on human rights and child protection, trained local leaders and communities, and followed up cases of rape with Police and the courts- For the first time in Nimba 7 cases of rape were adjudicated and four-person sentenced (2007)</p>		<p>2007</p>	<p>Nimba County</p>	<p>UNHCR – Saclepea Office</p>
<p>Cassava Transformation Project</p>	<p>(1) strengthened efficiency of actors engaged in the cassava value chain to improve access to inputs, and markets; (2) enhanced production, processing, and commercialization of the cassava value chain; (3) cassava value chain enhanced to be financially sustainable, and commercially viable; and (4) policies, programs, and incentives to stimulate the commercialization of the cassava sector advocated for and implemented.</p>		<p>April 2021 - Present</p>	<p>Southeastern Liberia</p>	<p>EU/CERETH</p>